


Library

Hebrew Union College-  
 Jewish Institute  
of Religion

Gift of

Batya Selavan

**For further information please contact:**

Sherut La'am Long Term Programs  
American Zionist Youth Foundation  
515 Park Avenue  
New York, N.Y. 10022  
(212) 751-6070 Ext. 247, 248

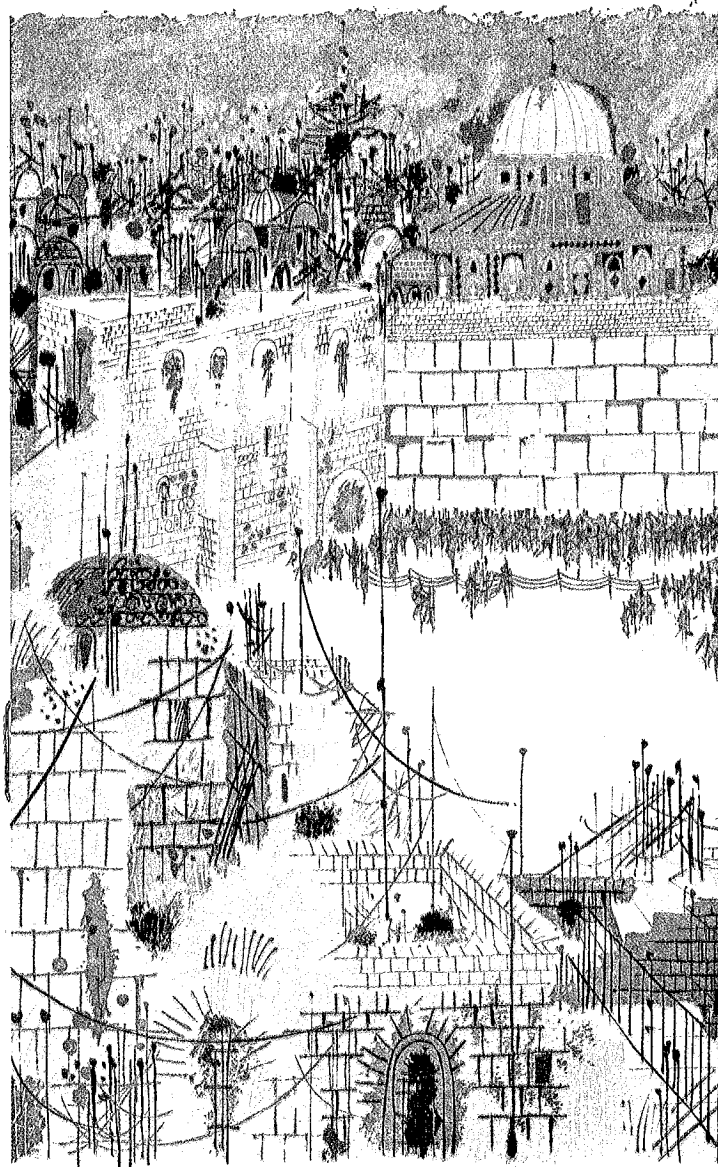
Designed by Avishay Greenfield

SC  
Box  
A-85  
687

# Sherut La'Am

ONE YEAR PROGRAM  
SIX MONTH PROGRAM

American Zionist Youth Foundation



## INDEX

### Sherut La'Am

#### ONE YEAR PROGRAM

#### SIX MONTH PROGRAM

1. Introduction .....	3
2. Placement Possibilities .....	3
3. Program Format	
a) The Ulpan .....	6
b) Work Period .....	7
4. Housing and Stipend .....	9
5. Touring the Country .....	9
6. Medical Coverage .....	10
7. Eligibility Requirements	
a) One Year Program .....	10
b) Six Month Program .....	10
8. Program Dates	
a) One Year Program .....	10
b) Six Month Program .....	11
9. Program Costs .....	11
10. Comments of Sherut La'am Volunteers ....	12
11. Map of Israel's Development Towns .....	14

## SHERUT LA'AM:

### ONE YEAR PROGRAM

### SIX MONTH PROGRAM

The Sherut La'am (Service to the People) Program provides an ideal opportunity to experience a vocational and social life in Israel. Participants are able to gain valuable work experience in their fields, or to explore a new one. As a young and developing country, Israel has opportunities in a wide variety of professions and fields of specialty. Since 1965 hundreds of young people have contributed to the development of Israel and to their own personal fulfillment by participating in Sherut La'am.

### PLACEMENT POSSIBILITIES

Participants on the program supplement existing work staffs in a wide variety of professions: Medicine; Law; Social Work; Dentistry; All sciences; Computers; Architecture; Physical, Occupational, or Speech Therapy; Health Education; Environmental Protection, Music and Art; Sports instruction; Teaching; and many others.

In applying to the program candidates are urged to clearly state the type of work they wish to do in Israel, and list any experience or coursework they have had in the field. In addition, applicants are encouraged to list any special talents and/or interests that could be helpful in determining a work placement. All files are forwarded to our office staff in Israel for review. Specific work assignments are negotiated during the first part of the program in Israel, and all participants must be interviewed by prospective employers before arrangements are finalized.



Placements are in development towns. The cities are only available to people who have already spent a year in the development towns or to people who have a specific profession which can only be found in a large city. The Jewish Agency in Israel is not able to provide housing in the cities. Participants placed in the major cities are responsible for their own housing. Our staff in Israel will help as much as possible.

Participants travel to Israel on a tourist visa which does not allow for salaried employment. Work placements are on a "volunteer" basis. Development town housing is provided. All participants receive a monthly stipend to cover food expenses.

It is suggested that participants bring notarized copies of diplomas, transcripts, and any form of professional certification to present to potential employers during interviews. Written recommendations from past employers are also helpful, especially those that outline the various responsibilities that you have undertaken and any special abilities that you may have. It is also advisable for "arts professionals"—architects, art teachers, etc.—to bring portfolios of their past projects.

**Note:** A participant with a B.A. or M.A. in a liberal arts field, i.e., history, literature, political science, will not necessarily obtain a position in that field.

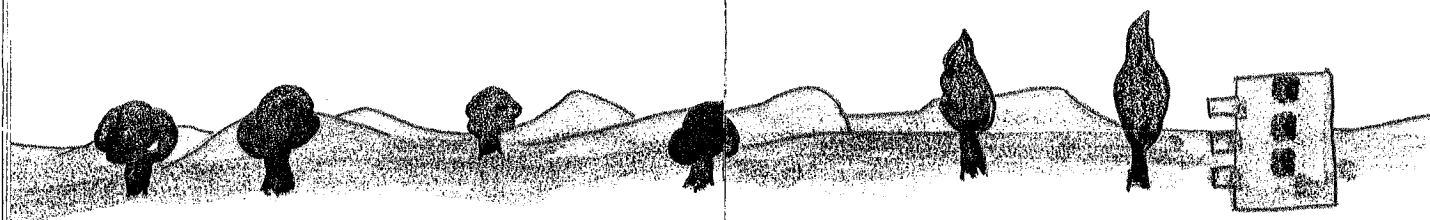
The following are some very specific descriptions of placement possibilities. Space does not allow for us to print descriptions of all placements. Please contact our office for further information.

1) "The Mariculture Laboratory in Eilat—also known as The Marine Biology Unit—gives an opportunity to any Sherut La'am participant who is interested in

mariculture to be intensely exposed to it." So states Hillel Gordin, Director of the Laboratory. Since the early 1970's the activity of the laboratory has increased and diversified to all the disciplines required to develop viable mariculture. The staff, at present, numbers 23 workers of which 10 are scientists and the rest are biology and chemistry technicians, maintenance and administrative personnel. To quote Dr. Gordin again: "The Mariculture Laboratory has been associated with the Sherut La'am program since 1975. Young people from the United States, United Kingdom and Latin America participate in mariculture research and development projects in Eilat. Many of them found the experience so stimulating that they stayed in Eilat much longer than the program requires. Many went from Eilat, as a direct result of their mariculture experience, to graduate schools to complete their education in this field."

2) The Pedagogic Center in Dimona serves the elementary, middle schools, and high schools in Dimona as well as in the surrounding Negev Desert towns of Yerucham and Mitzpe Ramon. Our volunteers have been responsible for creating games and visual teaching aids to be used as supplements to the regular English curriculum in the schools.

Dimona is a development town south of Beersheva with a population of about 30,000. The vast majority of people are from Indian or North African background. Dimona is situated in the middle of a seemingly endless desert. It is possible to walk to the end of a major street and see ahead nothing but rocks and hills—complete with camels, sheep, and Bedouin camps. However, the city has parks and trees and plenty of palm trees.



## PROGRAM FORMAT

- A. Three months of Hebrew study (the Ulpan).
- B. Nine months of working in one of Israel's numerous development towns.

### The Ulpan Period

The first three months are devoted to intensive Hebrew study. A crucial phase of the program, the "Ulpan" is designed to provide participants with a basic grasp of Hebrew. Without essential language skills it is difficult to integrate into Israeli society. Five hours a day, six days a week are devoted to classroom instruction. Many after-class hours are spent in study and review.

Classes are available for beginners, as well as more advanced students, though *all* participants are urged to begin studying Hebrew prior to their departure. Persons fluent in Hebrew can often begin their work placements before the conclusion of the ulpan period. The ulpan takes place in either Kiryat Shmonah or Tiberias. Both are located in northern Israel. An ulpan center includes classrooms, communal dining room, dormitory-type accommodations and a TV lounge. Room and board are provided. In addition to the Sherut La'am group an ulpan also houses new immigrants from the Soviet Union, South America, and North Africa. The climate in the north of Israel is quite pleasant, although winters can be cold and wet. Group members often spend their after-class hours volunteering in various facilities in town. This is the perfect way to begin using one's developing Hebrew skills. It is also the best way to find out what the people of Israel are like and how best to function with them during the following nine months.

During the ulpan phase of the program seminars and tours of the various development towns familiarize participants with their future work environments. Past participants of the program suggest that all group members do some independent research as well in

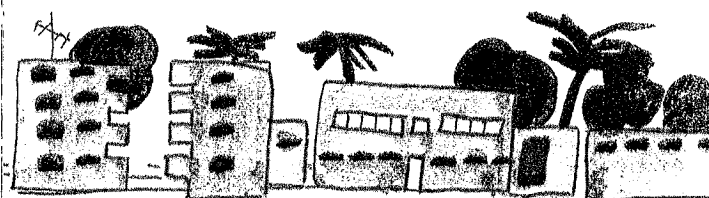
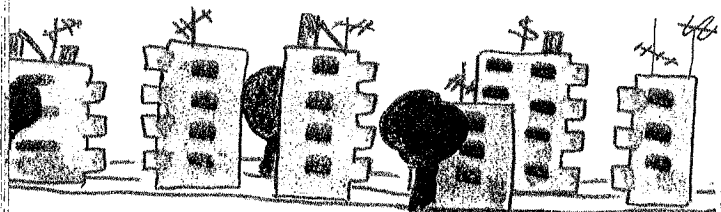
order to find out what opportunities exist in a given development town and where it is best for a person in a particular profession to work. In addition to job availability, some of the factors that go into the final decision of a participant's work assignment are *location* of available jobs and availability of housing in the area.

### The Work Period

During the nine month work period participants are dispersed throughout the country, work in their fields or professions, and receive housing and a monthly stipend.

Once situated in a chosen development town and job placement, participants often find that the satisfaction they derive from their work is judged by a completely different set of standards than that which they are accustomed to at home. This is better understood after reading evaluations of some former participants' experiences.

"Success, per se, cannot be judged quantitatively. If you are in the field of education or social service, it is not always the number of clubs or sports groups that you've initiated that will determine your ultimate "success." In terms of technical skills the level of professionalism at which you work will not necessarily determine your sense of personal reward. Remember, until now you have been functioning in a society in which you are at home. Moreover, you have probably always had the comfort of needing only English. In Israel you are really very much in a learning situation. Think of it in this way and make every effort to become a part of the staff where you work. At the same time use the skills you possess to effect what improvements you can. Like it or not, the Israelis often make this a "humbling" learning experience for you. On the other hand, you must show them that you have something to offer."



"If you need close supervision in your work, you may not find it in a development town. It helps if you are trained in something or at least have a lot of ideas along with plenty of energy to put them into effect. If you are prone to waiting to be told what to do, you might also run into problems. Much of any volunteers' accomplishments are due to his own ideas and resources and "chutzpah." If you have chutzpah, that's a big plus on your side."

Of course individual situations vary greatly. It is important that participants be flexible in both their attitudes to their work and the duties they assume. In the course of a Study Tour to Israel, some of the psychologists who interview candidates for Sherut La'am came up with the following thoughts about social and cultural aspects to life in Israel:

1) The development towns usually do not offer a single, educated peer group for college graduates. For the most part the men and women are married with small children and have less formal education than the volunteers. This means that volunteers must use their own initiative to meet Israelis to socialize with on a peer group level.

2) Development town people have been characterized by past volunteers as being quite warm and endearing. However, their culture often is perceived as being remarkably sexist with men in positions of status and women accorded less sensitivity and consideration. Some volunteers have been able to organize special womens' or mens' groups in these towns which afford the townspeople an opportunity to talk about these attitudes.

## HOUSING AND STIPEND

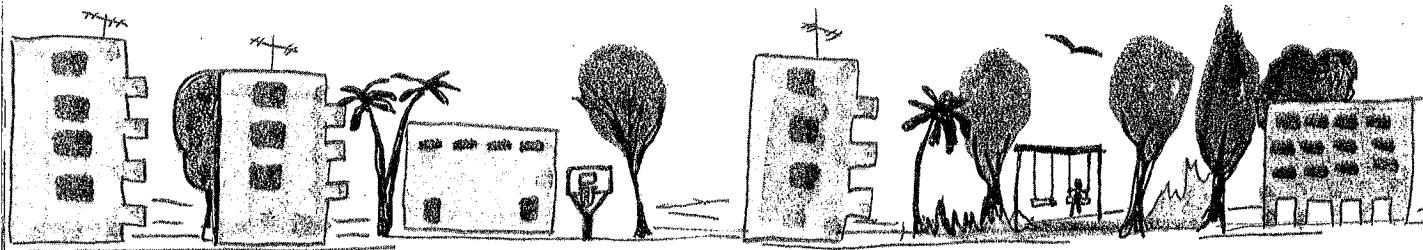
As mentioned before, during the work period participants are provided with housing and a monthly stipend for food.

Generally each apartment has two bedrooms, a living room, bathroom, lavatory, and balcony. In each bedroom there is usually a closet, shelves, two beds and a portable kerosene heater. In the living room there is a dining table, chairs, and often an extra bed/sofa. In the kitchen there is a gas stove (without oven), refrigerator, small table and cabinets. In the bathroom there is a shower, clothes hamper, and mirror. Pillows, blankets, and sheets are provided as are a minimum set of dishes and cooking utensils. Of course, the specifics vary but this generally describes the standard equipment in most apartments. Each apartment acquires its owners' personality, with extra book shelves from bricks and boards, posters, tablecloths, tape recorder and cassettes, etc. Personal items from home that are easy to pack will help add warmth to the apartment and make it feel more like home. Three or four persons sharing an apartment is standard, although due to the current housing shortage in Israel there may be up to five people in an apartment.

The monthly stipend is meant to cover basic food expenses. All group members will need additional money of their own to supplement this amount for movies, restaurants, gifts and personal travel around the country. It is interesting to note that past volunteers have found that smaller, isolated development towns are more friendly and inviting while the larger towns have such diversions as theater, concerts, movies and clubs. Therefore, one can save some money by living in a smaller town!

## TOURING THE COUNTRY

All Sherut La'am program participants are invited to join the various tours and seminars organized by our office in Israel. In addition to providing general tours of the country, these trips afford group members a chance to get together and share experiences.



## MEDICAL COVERAGE

While in Israel participants are covered for routine medical care, with hospitalization, through Kupat Cholim (Israel's National Health Insurance). This does not cover optical, dental, or mental treatment. Nor does it cover any chronic illness or pre-existing condition. This is the same medical coverage that almost every Israeli citizen receives.

## ELIGIBILITY REQUIREMENTS

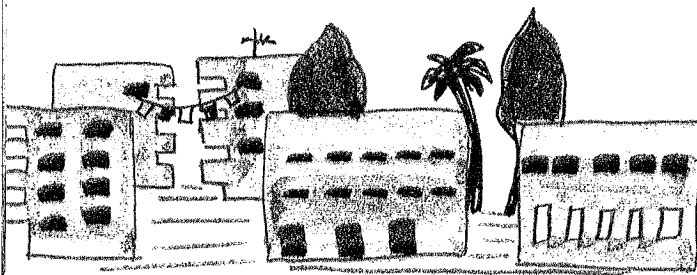
**ONE YEAR PROGRAM** — Open to people between the ages of 20-32 who hold a degree from a four year college or university or from a two year technical/vocational institute. Married couples without children are eligible.

**SIX MONTH PROGRAM** — Open to people who have completed at least one year of college or vocational training or to college graduates up to age 32. Candidates for the six month program must have a good conversational knowledge of Hebrew or a technical skill since an ulpan is not provided. It is also important for six month candidates to have prior Israel experience.

All applicants to either the one year or the six month Sherut La'am program are required to complete an established screening procedure. We have found that the following personality characteristics seem to facilitate social and vocational integration and adjustment: Independence, Creativity, Initiative, Flexibility, and Sense of Humor.

## PROGRAM DATES

**ONE YEAR PROGRAM** — Participants meet on an assigned date and time, at a specific meeting place. The one year Sherut La'am program begins in **JULY** and **OCTOBER** of each year.

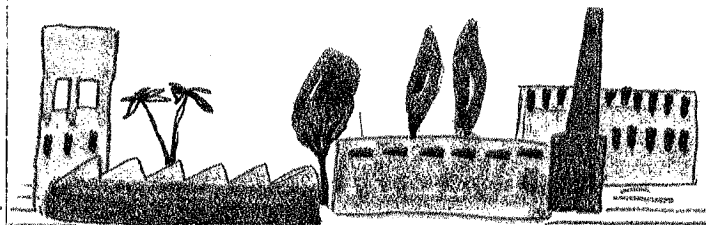


**Applicants to the October Group** — Please note the following: Persons with backgrounds in liberal arts or the social sciences generally work within the educational system or in a community center. These institutions function on an academic calendar, which means that jobs terminate on June 30. It is difficult for our office in Israel to place people in summer jobs, since it is vacation time and many programs are suspended and facilities closed. Participants will be encouraged to investigate possibilities of summer placements on their own with assistance from our Israeli staff. There are no formal teaching placements available to October participants.

**SIX MONTH PROGRAM** — Applications for this program are accepted on a year-round basis. Participants must make a minimum commitment of six months in order for a placement to be made on an individual basis. Upon arrival in Israel, six month program participants are expected to contact our Jerusalem office. *Participants are responsible for arranging their own housing and food for a two week period after reporting to the Jerusalem office, or until such time as all placement arrangements are finalized.*

**ALL PARTICIPANTS MAKE THEIR OWN TRAVEL ARRANGEMENTS TO ISRAEL.**

**PROGRAM COSTS** (All prices are subject to change). Airfare—Participants make their own arrangements. \$25 Non-refundable registration fee submitted with application. \$200 Program cost payable to AZYF upon acceptance to the program. \$100 Refundable deposit payable to our office in Israel upon commencement of the program. This deposit is refunded in full if all equipment issued is returned in acceptable condition. We have found that this deposit also insures that participants have enough money on hand to put toward the cost of return airfare to the States. Payment of this deposit should be made in travellers checks or by cashier's check made out to: World Zionist Organization, Youth and Hechalutz Department. All Canadian participants must pay all fees in U.S. funds.



The following are two short biographies and some comments from Sherut La'am volunteers:



**LORI GOODMAN** — Sherut La'am One Year Program, October 1980-81

Lori received a B.A. degree in Journalism from Glassboro State College in New Jersey. She had worked on a few newspapers as an editorial assistant since graduating from college:

"Looking back on my ten months as a Sherut La'am volunteer, I feel that I have accomplished almost everything I set out to do. I came to Israel knowing little about the land, the life, or the people. I wanted to travel, work in my field, learn a little more about Judaism and see if I could possibly want to settle here one day. The one day trips during the ulpan and the longer ones afterwards gave me a chance to see parts of the country that I might have never gotten to. At the same time I have many fond memories of the group, the hikes, and sing-a-longs, etc. I was very fortunate to work in my field. I worked as a journalist for the Joint Distribution Committee. I do think, though, that we had an especially close group which contributed to the good feelings most people seem to have towards their year here. I am leaving with strong feelings for the country and hope to come back to live here one day. Even if I remain in the States, Israel will always be an important part of my life."



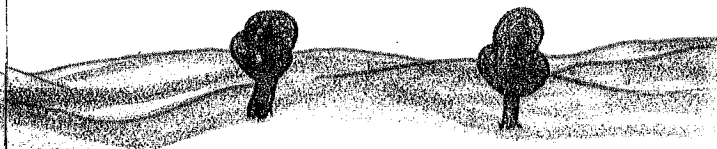
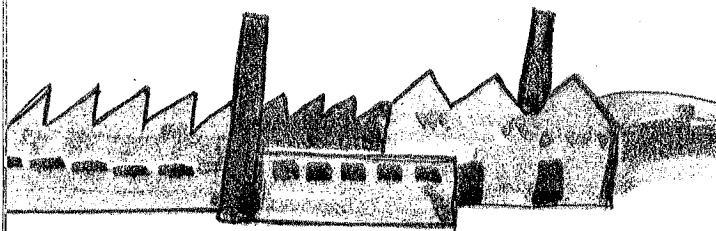
**MICHAEL ROSEN** — Sherut La'am Six Month Program, June-December 1981

Michael received his B.A. degree in Pre-Med from Yeshiva University in New York City. He had already spent nine months in Israel the year before applying to Sherut La'am. On his application form Michael stated that he would like "to

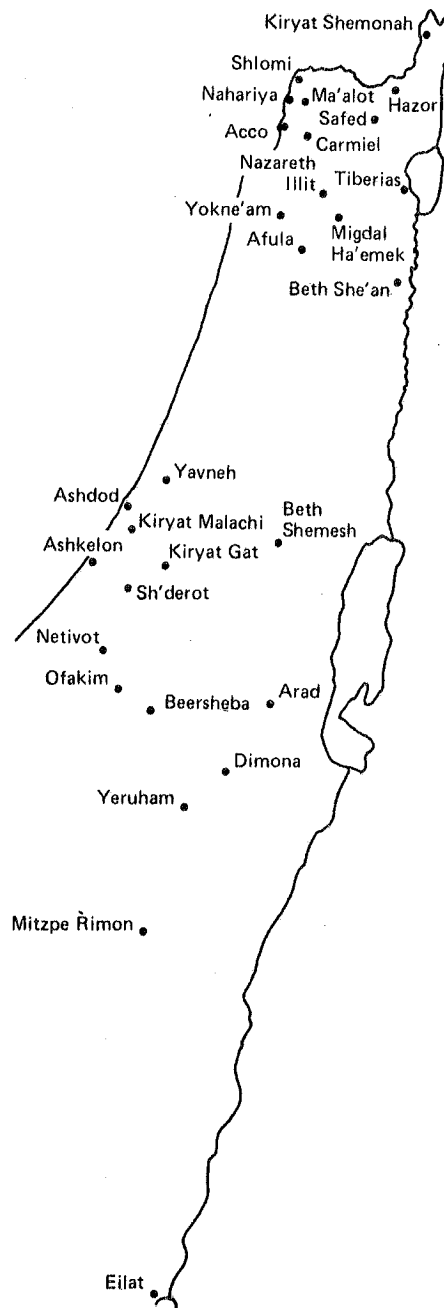
work as part of a research staff in the field of medicine and/or to work in a hospital laboratory or emergency room.

"I heard of Sherut La'am from a friend who did Sherut La'am with an Israeli accountant and then subsequently served as comptroller of the city of Hazor HaGalit. I applied through the New York office which was helpful and honest. The actual research position I arranged myself prior to my arrival in Israel through a contact at the Ben Gurion Medical School. The treatment in Israel by Nurit and Moshe at the Sherut La'am office in Israel was nothing short of superb—honest, sincere. I lived in a four room, fully furnished (including kitchenware) apartment a few minutes from the hospital. I suppose that one could live very simply on the stipend if he only ate the subsidized products (milk, bread, butter, eggs) and inexpensive vegetables and fruits, but ideally an additional \$20-\$25 a month should be brought from home to cover different kinds of food, travel, entertainment, gifts, etc. I ate very cheaply at the hospital or government institutions which provided reasonably priced meals.

The official supervision is minimal which I consider a plus because this allows for a flexible schedule, independence, and a non-pressure atmosphere. The research facilities in Ben Gurion Medical School are excellent and it is easy to get involved seriously and to be in contact with other doctors and researchers in Beersheva and other centers in Israel."



# ISRAEL'S DEVELOPMENT TOWNS



TEAR OFF AND MAIL IN ENVELOPE

Please send me application forms for:

- ☐ Six Month Program      ☐ College Graduate Program One Year

Last Name \_\_\_\_\_ First Name \_\_\_\_\_

Address (Street & Number) \_\_\_\_\_ City \_\_\_\_\_

State \_\_\_\_\_ Zip Code \_\_\_\_\_ Telephone (Area Code) \_\_\_\_\_

Sex \_\_\_\_\_ Date of Birth \_\_\_\_\_ Present Academic Status \_\_\_\_\_

Occupation \_\_\_\_\_

Where did you receive this brochure? \_\_\_\_\_