

Glenn H. Rosenfeld

A SONG FOR SOCIAL CLUBS.

DRINK, BOYS,
DRINK.

WORDS BY
SIDNEY ROSENFELD.

MUSIC BY
LUSCOMBE SEARELLE.

New York and Chicago,

PUBLISHED BY

12 BIBLE HOUSE. **RICHARD A. SAALFELD,** 180 NICH. AVE.

Copyright 1883 by R. A. Saalfeld.

DRINK, BOYS, DRINK.

DRINKING SONG.

Words by SYDNEY ROSENFELD.

Music by LUSCOMBE SEARLE.

Allegro.

As we gath-er to-gether In hut or on heath-er; What balm can sus-tain us like
The lass that we dote on, The hopes that we float on; Are fair-er and bright-er for

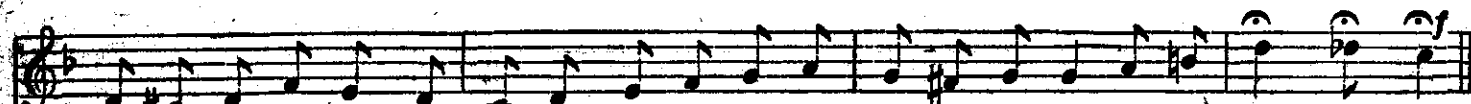
drink, drink, drink! When for-tune is fic-kle, when life is a pic-kle, Our
drink, drink, drink! Our swords let us buc-kle, with nerve in each knuc-kle, And



pal - ates we'll tic - kle With drink, drink, drink! The kind does - 'nt mat - ter, No
fight as we chuc - kle, For drink, drink, drink! All sor - row, all sad - ness, Is



na - tion we'll flat - ter, By plac - ing it first for its drink, drink, drink! The
lit with new glad - ness, When lips are in - clin - ing to drink, drink, drink No



puzzle's too risk - y, Which makes us more frisky, Good wine or good whiskey, Let's drink! drink! drink!
thorn and no this - tle Our feel - ings can bristle, While wetting our whistle, With drink! drink! drink!



Now drink, boys, drink, When glasses we clink all sor-row must sink, So

drink, boys, drink, Dont argue and think, but drink, . . So

drink, boys, drink, When glass-es we clink, all sorrow must sink, So

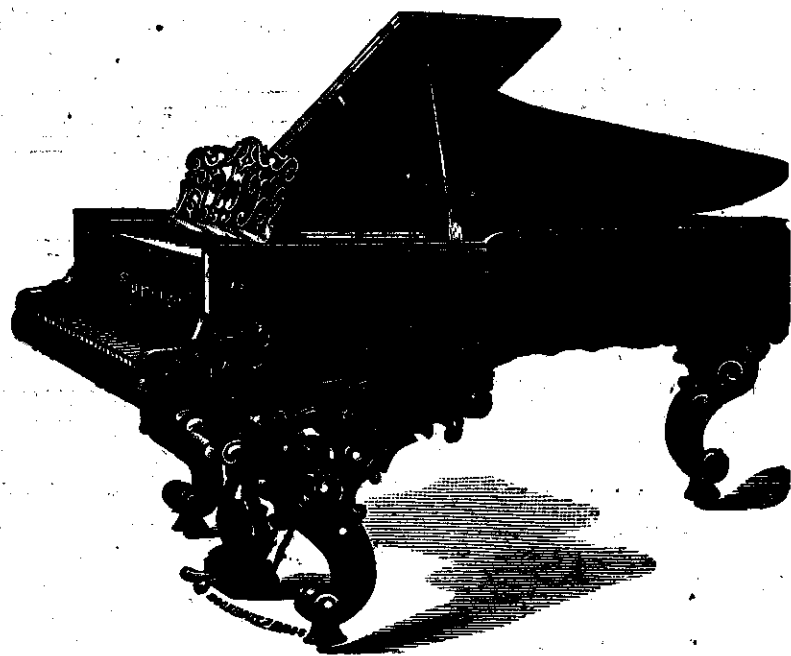
drink, boys, drink, Oh dont argue and think, but drink.

D.C.

Drink, Boys, Drink.—4.

SOHMER

GRAND, SQUARE & UPRIGHT PIANOS.



The enviable position SOHMER & CO. hold among American Piano Manufacturers is solely due to the merits of their instruments. There are comparatively few makers in this country who can claim such a rapid recognition in so short a time from the leading critics and connoisseurs; they are used in preference to any other piano in Conservatories, Schools and Seminaries, and the Concert Room, on account of their volume and purity, their richness and singing quality. The touch, or action of the SOHMER Piano is responsive, and unites with absolute precision, a delicacy and pliability seldom found in the instruments of any other makers. The workmanship of the SOHMER Piano is shown in the perfect finish of every part, and in the skilled use of the best material, resulting in a product no less pleasing to the eye than durable.

Highest Awards at Centennial Exhibition, 1876. Also Highest Award at Montreal, 1881-82.

SOHMER & CO., 149 TO 155 EAST 14TH ST.

Warerooms 2nd Door from Academy of Music.

Manufactory's, 149, 151, 153, 155 E. 14th St. Manufactory's 143, 145, 147 E. 23d St.

NEW YORK.